

# 2026 Sponsorship Opportunities

**sm<sup>ps</sup>**  
San Antonio



## SMPS Vision

Business transformed through marketing leadership.

## SMPS Mission

Our mission is to engage, inspire, and empower A/E/C professionals for leadership and Lifelong learning.

### 2026 BOARD OF DIRECTORS



#### President

Maria Nelson | Halff



#### President-Elect

Laurel Ehsai | SpawGlass General Contractors, Inc.



#### Past President

Garrett McCullough | Marksmen General Contractors



#### Treasurer

Heather Blazi | Pfluger Architects



#### Secretary

Kyra Rojas | Joeris General Contractors, LLC



#### Advisor

Frank Munoz, MBA | ECS Southwest LLP



#### Communications Director

Jeanette Scarsdale | DBR Engineering



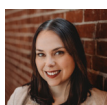
#### Membership Director

Kayla Wiggins | Turner Construction Company



#### Programs Director

Debbie Mann | Raba Kistner, Inc.



#### Education Director

Maddy Stokes, CPSM | Cleary Zimmermann Engineers



#### Special Events Director

Alexandria Ballew, MA | San Antonio AGC



#### Sponsorship Director

Shelby Hodges, MBA | RVK Architecture

### SMPS San Antonio Community,

We are thrilled to share an exciting opportunity to elevate your brand, deepen your connections, and support the future of our chapter and the A/E/C industry in San Antonio. Annual sponsorship with SMPS San Antonio is officially open for the 2025–2026 program year!

#### As a sponsor, your firm gains:

**Visibility:** Year-round recognition across our events, website, social media, and communications.

**Connection:** Direct access to industry leaders, decision-makers, and rising professionals shaping the San Antonio region.

**Impact:** A chance to strengthen our chapter's programming, professional development, and networking opportunities for all members.

Your support not only raises your company's profile, but also fuels the mission of SMPS—to transform business through marketing leadership. Together, we can continue building a vibrant, innovative, and collaborative community that drives the A/E/C industry forward.

Join us in making 2025–2026 another outstanding year for SMPS San Antonio. Together, we can create opportunities, celebrate 25 years of successes, and strengthen our industry in the region.

With gratitude and excitement,

Shelby Hodges, MBA  
Sponsorship Director, SMPS San Antonio

## WHAT IS SMPS?

The **Society for Marketing Professional Services (SMPS)** is a national organization and a premier provider of marketing and business development resources for the architecture, engineering and construction (A/E/C) industry sectors. Our organization focuses entirely on promoting and advancing the profession through education, networking, and career development. Our membership consists of firm principals, business development executives, marketing directors, managers, coordinators and assistants.

## BENEFITS OF SPONSORSHIP

- High visibility for low cost
- Exposure to principals, marketers, professionals and decision-makers in architecture, engineering, construction, real estate, and development
- Opportunity to address and impress at networking events and programs
- Verbal recognition at educational programs
- Stand out from the competition and lead by example
- Build your bottom line through cost-effective marketing that delivers results

## WHO SHOULD SPONSOR?

- A/E/C firms
- Accounting software suppliers
- Consulting Firms
- Binding equipment retailers
- Promotional product retailers
- Catering companies
- Contact management software
- Graphic design firms
- Market research companies
- Office equipment suppliers
- Presentation equipment retailers
- Printing and signage firms

## TYPES OF SPONSORSHIP

### ANNUAL SPONSORSHIP

Support the yearly efforts of SMPS San Antonio with an annual sponsorship. This helps the chapter plan for future programming, be able to host membership events and add value to all aspects of the chapter. Your firm will also get the biggest return with complimentary tickets, special privileges, yearlong promotion and the ability to participate more fully in each and every program and event.

### PROGRAM SPONSORSHIP

SMPS San Antonio provides high-quality and diverse market luncheons for our members and A/E/C community. Our programs attract the highest crowds and are typically held 5-8 times a year. We target primarily owners and industry leaders among a wide variety of public and private market segments. Two sponsors per luncheon.

### EDUCATION SPONSORSHIP

SMPS San Antonio provides educational, professional, and personal development opportunities through a diverse and well-rounded education calendar. Education events can include half-day workshops, skills training, lunch-time webinars, and speaker seminars.



# EXCITING UPDATES FOR 2025–2026 SPONSORSHIPS

All annual sponsorships now include **three extra months of visibility**, running from **September 2025 through December 2026**. Plus, enjoy new exclusive benefits:

- **Priority Access to exclusive Round Table Events**
- **Complimentary Registrations to the Evening of Excellence**

## ANNUAL SPONSORSHIP

	ENGAGE \$5,000	INSPIRE \$4,000	EMPOWER \$2,000	SUPPORTING \$500
Number of Sponsorships Available	2	6	Unlimited	Unlimited
Sponsor designation on badges at chapter events	●	●	●	●
Logo included in chapter e-blasts	●	●	●	Firm Name
Logo or Firm Name with link on the chapter website	●	●	●	Firm Name
Logo or Firm Name on banner displayed at all chapter events	Logo (large)	Logo (med.)	Logo (med.)	Firm Name
Complimentary registration to chapter luncheon	6x/year	3x/year	6x/year	1x/year
Logo or Firm Name on programs at chapter luncheons	Logo	Logo	Logo	Firm Name
Logo on PowerPoint at chapter lunches	●	●	●	Firm name
Verbal Acknowledgment at chapter luncheons	●	●	●	
Social media spotlight/re-share (Facebook, Instagram, LinkedIn)	3x/year	2x/year	1x/year	
Priority access to market luncheon sponsorships	●	●	●	
One (1) seat at all VIP Pre-Lunches	●	●		
Exclusive slide on PowerPoint at sponsored events	●	●		
Round Table priority access	●	●		
One (1) complimentary registration to education events	All	3x/year		
Complimentary Registration to Evening of Excellence	2 Tickets	1 Ticket		
One (1), two-minute plug for the firm at chapter event	●			
One (1) Spotlight Email (i.e. feature story, advertisement)	●			
Premium Perk (SMPS Membership)	●			

## EVENT SPONSORSHIP

	PROGRAM* \$850	EDUCATION* \$150
One (1) seat at all VIP Pre-Lunches/Education Event	●	
Verbal acknowledgment at program/education event	●	●
Logo or Firm Name on program/education event	●	●
Logo on PowerPoint at program/education event	●	●

\*Event Sponsorships are priced per event

Contact [shelby.hodges@rvkarchitecture.com](mailto:shelby.hodges@rvkarchitecture.com) with any questions regarding sponsorships.



# SPONSORSHIP COMMITMENT FORM

PLEASE COMPLETE AND EMAIL THIS FORM TO [SHELBY.HODGES@RVKARCHITECTURE.COM](mailto:SHELBY.HODGES@RVKARCHITECTURE.COM)

I confirm the intent of \_\_\_\_\_ (Firm Name) to sponsor the Society for Marketing Professional Services San Antonio Area Chapter at the following level:

## ANNUAL SPONSORSHIPS

ENGAGE | **\$5,000**

2 Available

INSPIRE | **\$4,000**

6 Available

EMPOWER | **\$2,000**

Unlimited

SUPPORT | **\$500**

Unlimited

## EVENT SPONSORSHIPS

MARKET LUNCHEON | **\$850/LUNCHEON**

EDUCATION | **\$150/EVENT**

---

By signing below, I confirm that I understand that sponsorship benefits go into effect upon receipt of my payment.

Signature: \_\_\_\_\_ Date: \_\_\_\_\_

Printed Name: \_\_\_\_\_

Company Address: \_\_\_\_\_

City, State, Zip: \_\_\_\_\_

Company URL: \_\_\_\_\_

**NOTE** | **ENGAGE** and **INSPIRE** will be reserved first come, first served. We will process based on receipt of this commitment form.

---

## PAYMENT METHODS

**CHECK** | Please mail a check with a completed copy of this form to:

**SMPS San Antonio | P.O. Box 17945 San Antonio, TX 78217**

---

## LOGISTICS

Please email firm logos to [shelby.hodges@rvkarchitecture.com](mailto:shelby.hodges@rvkarchitecture.com) in high resolution format.

## QUESTIONS

Please Contact [shelby.hodges@rvkarchitecture.com](mailto:shelby.hodges@rvkarchitecture.com) with any questions regarding sponsorships.



## JOIN OUR MEMBERS AS WE CELEBRATE 25 YEARS!

Aethera Engineers, LLC  
AG3 Group, LLC  
AIA San Antonio  
Alamo Architects  
Alpha Terra Engineering Inc  
Alterman, Inc.  
Americrane  
Ardith Rademacher Associates  
(ARA)  
Arias & Associates, Inc.  
Bain Medina Bain, Inc.  
Bartlett Cocke General  
Contractors  
Best Block  
Catamount Constructors, Inc.  
CBI Group  
CBRE  
CGC General Contractors Inc.  
Cleary Zimmermann Engineers  
Cofield Group  
Colliers Engineering & Design  
Cude Engineers  
D. Wilson Construction Company  
DBR  
Element Thirty  
EMA Engineering & Consulting,  
Inc.  
Emerald Fox Marketing &  
Consulting  
Facility Programming and  
Consulting  
Flatiron Dragados Constructors,  
Inc.  
Ford, Powell & Carson, Architects  
& Planners, Inc.  
Foster CM Group, Inc.  
Freese and Nichols, Inc.  
FSG Electric

Galaxy Builders, Ltd.  
Garza/Bomberger & Associates  
Guido Construction Company  
Inc  
Halff Associates, Inc.  
Hunter Service Group  
Insite Design & Planning  
InTEC  
Joeris General Contractors  
Jordan Foster Construction  
Jose I. Guerra, Inc.  
KCI Technologies  
Kiewit  
Kimley-Horn  
KRobbins Consulting LLC  
KW Landscape Architects  
Lake|Flato Architects  
Lopez Salas Architects Inc  
Marksmen General Contractors  
Marmon Mok  
Marmon Mok Architecture  
Method Architecture  
Noble Texas Builders  
O'Connell Robertson  
Pape-Dawson  
Pfluger Architects, Inc.  
PJS of Texas  
Poznecki-Camarillo, LLC  
Primary Organization  
Project Control  
Protection Development,  
Incorporated  
Quiddity Engineering and  
Surveying  
Raba Kistner  
Robins & Morton  
Rogers-O'Brien Construction  
RS&H, Inc.

RSCR Inc.  
Rudd & Adams Masonry  
RVK Architecture  
San Antonio AGC  
Setterbo Engineers  
Skanska  
SKYE MEP  
SpawGlass Contractors, Inc.  
Structura Inc  
Sundt Construction, Inc.  
Sunland Group, Inc.  
SWCA Environmental  
Consultants  
TBG Partners  
Terracon Consultants, Inc.  
Tetra Tech, Inc.  
The Brandt Companies, LLC  
The University of Texas at San  
Antonio  
Truist Bank  
Turner Construction  
UES  
Unintech Consulting Engineers  
University of Texas at San  
Antonio/College of Business  
Wiss, Janney, Elstner Associates  
Zachry Construction Corporation  
Zaron Engineering

